

## Prevent Unauthorized Network Access

A10 Networks' IDaccess™ series of appliances are the industry's most cost-effective, integrated Network Authentication and Guest Network Access solutions in their class. As part of A10's ID Series for identity management, the IDaccess family are purpose-built, security hardened 1U appliances that integrate RADIUS, DHCP, Guest Access and A10's unique IP-to-ID Service. The IDaccess appliances support comprehensive authentication methods and a wide-array of back end servers. By combining authenticated DHCP with a guest access portal, network administrators are empowered with a powerful and flexible network management tool to support all network and guest authentication needs.



**IDaccess 500  
&  
IDaccess 800**

- Centralizes authentication for both guests and employees
- Ensures guests can access only the resources they need
- Eases burden on IT administrators with a single solution for both internal and guest users
- Leverages existing infrastructure without costly and complex upgrades
- Easy to use guest management portal
- Best price/performance in its class

## IDaccess Main Components

► **Guest Access** – Provides a user friendly and intuitive interface that allows front desk personnel to create and manage guest accounts. In addition, it supports authentication for both internal users and guests in a single appliance, easing the burden on IT administrators by eliminating the need to manage multiple devices.

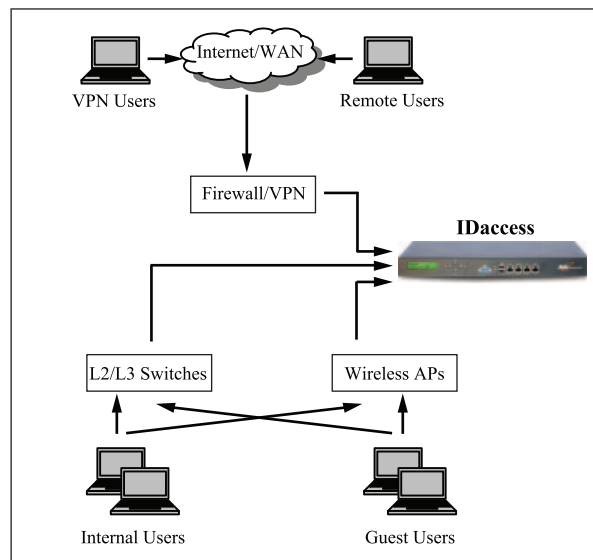
► **RADIUS Server** – Provides robust authentication services and supports the latest RADIUS protocols for wireless, wired, remote access, and perimeter security applications.

► **IP-to-ID** – Provides instant user identification to isolate security issues faster and improve compliance reporting. Enables tracing of events back to individual employees, eliminating a manual and time consuming task.

► **Authenticated DHCP** – Provides isolation of unauthorized users and redirects them to authenticate. This capability allows companies to enforce that all users authenticate without taking the effort to roll out labor intensive technologies such as 802.1X or Network Access Control (NAC).

► **Reporting** – Provides rich identity-based reports, logs and alerts for all authentication functions to enhance auditing and long-term record retention.

## Deployment Scenario



## Centralized Authentication and Guest Access

## IDaccess Features

### » Authentication Protocol Support

- PAP, CHAP, MS-CHAP, MS-CHAPv2
- EAP 802.1X Support
- EAP-MD5, EAP-TLS, EAP-MSCHAPv2
- EAP-TTLS, EAP-PEAP
- EAP-LEAP, EAP-SIM
- EAP-GTC, EAP-OTP
- EAP Certificate Management

### » Authentication Server Support

- Internal RADIUS
- RADIUS Proxy Authentication
- LDAP v2, v3 / OpenLDAP
- Microsoft Active Directory
- Windows NT
- Novell eDirectory
- Sun ONE / iPlanet Directory Server
- NIS
- MS SQL, Oracle, mySQL, PostgreSQL, Sybase
- Kerberos v5
- RSA SecurID

### » Accounting Formats

- Cisco TACACS, Free RADIUS
- Livingston, MERIT v2

### » Realm/Group/User Policy Features

- Realm Alias Support
- Realm-Based Access Control
- Multiple Policies per User
- NAS-Based Policy per User
- Group-Policy Configuration
- Group-Default Profile Configuration
- Group-Level Access Control
- Group-Device Access Control
- Concurrent Session Control
- Inactivity Timed Policy Control
- Scheduled Group Policy Control
- Time Based Usage Quota

### » Guest Access

- Authenticated DHCP-based Guest Access
- 802.1x-based Guest Access
- Guest Access Portal
- Easy-to-use GUI

### » IP-to-ID Correlation Services

- Integrated Queries and Reporting
  - ♦ Logon/Logoff Activity With User ID
  - ♦ Find by IP
- Universal Identity Resolver (UIR)
- 3rd Party Integration Through XML API

### » Management Features

- Secure Web GUI (HTTP and HTTPS)
- SSH, Telnet, RS-232 Serial Console
- SecurID Support for Management Access
- Advanced Command Line Interface (CLI)
- SNMPv1, v2
- Minimal open ports (1812, 1813, 443)
- Encrypted Passwords
- Configuration Save Validation
- Secured Updates, Backup & Restore
- Multiple Language Support
  - ♦ English, Japanese, Simplified and Traditional Chinese

## Hardware Specifications

### » Scalability

- IDaccess 800 – 10,000 users, 300 devices
- IDaccess 500 – 3000 users, 100 devices

### » Interfaces

- IDaccess 800: 4 x 10/100/1000 Ethernet Ports
- IDaccess 500: 4 x 10/100/1000 Ethernet Ports

### » Dimensions

#### ♦ IDaccess 800

- 1.75 in (H), 17.0 in (W), 19.5 in (D)
- 44.45 mm (H), 431.80 mm (W), 495.30 mm (D)
- Weight 17.6 lbs (8.0 kg), 1 U Rack Mountable

#### ♦ IDaccess 500

- 1.70 in (H), 16.7 in (W), 10.6 in (D)
- 44.40 mm (H), 426 mm (W), 270 mm (D)
- Weight 13.2 lbs (6.0 kg), 1 U Rack Mountable

### » Power

- AC input voltage 100 to 240VAC
- Frequency 50 to 60Hz
- Single Power Supply 300W max

### » Hard Drive

- IDaccess 800: 160 (SATA)
- IDaccess 500: 160 (IDE)

### » Environmental

- Operating Temperature 32 to 104 °F (0 to 40 °C)
- Storage Temperature 13 to 158 °F (-25 to 70 °C)
- Humidity 5 to 95% non-condensing

### » Regulatory Certification

- FCC CE and VCCI (800 and 500)
- UL, TUV and CB (800 only)

### » Standard Warranty Coverage

- 90 Days Hardware & Software