



Network Snapshot

AX Series

CRC Health Group

January 2009

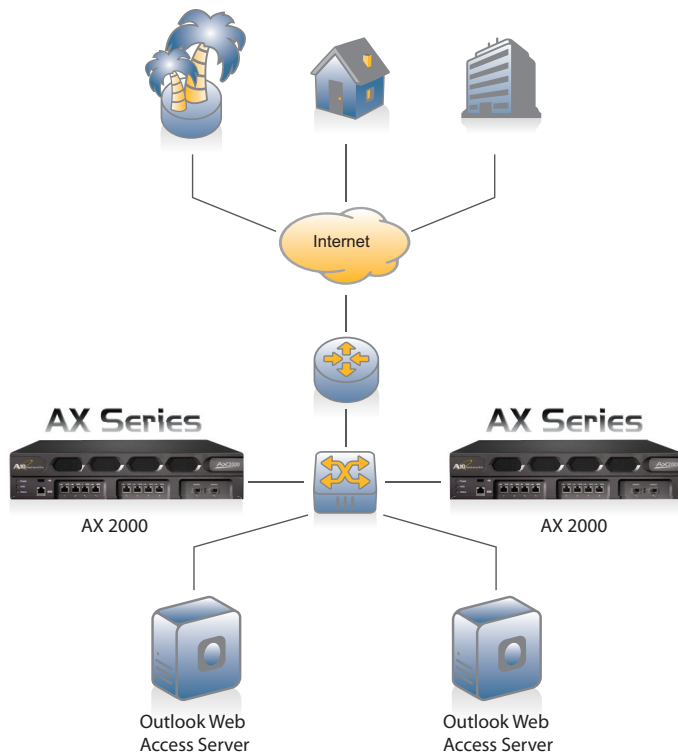


SITUATION

CRC Health Group is the largest provider of specialized behavioral health care services in the U.S., treating more than 30,000 patients each day. CRC has 145 facilities with staff located across the U.S.

SOLUTION

CRC provides its staff with Microsoft Outlook Web Access so that its users can access email anywhere and anytime when they are off-site, or on site but not at their own terminal. To ensure that Outlook Web Access is always available and responsive, CRC deployed A10's AX Series server load balancers to balance the load.



“The A10 Networks AX Series delivers tremendous value by including all of the required features, such as GSLB and local traffic management, in the platform. Buying two boxes to do local and global traffic management was not an option for us when we could achieve this in a single box with the AX Series. In addition, the responsiveness of A10's support and development teams to meet our needs quickly is a key differentiator.”

*Jay Raimondi, Vice President and CTO,
CRC Health Group, Inc.*

SUCCESS

The AX Series load balances HTTP, HTTPS and POP3. The AX Series also off-loads SSL, which reduces the number of servers required to support Web transactions, while at the same time increasing transaction speed. Today, CRC staff reports experiencing faster Web response times since the AX Series was deployed.

In the future, CRC requires a Global Server Load Balancing (GSLB) solution for site-to-site failover. In addition to the industry-leading price/performance, CRC chose AX Series for its unique and efficient approach for GSLB, which is included in all AX Series models with no additional charge.

Prior to purchasing the AX Series, CRC Health Group already deployed A10's ID Series network identity management appliance. Utilizing the User Self Service module, CRC increased compliance scores by allowing critical password management functions to be centralized via the ID Series platform. This resulted in reduced help desk calls and increased user productivity.

Network Snapshot

CRC Health Group

January 2009



ABOUT AX SERIES

A10 Networks' AX Series is the industry's best price/performance advanced traffic manager - helping enterprises and ISPs maximize application availability through a high-performance and scalable Web Application Delivery platform. The AX's Advanced Core Operating System (ACOS) has garnered the company numerous awards and is revolutionary due to its true symmetrical multi-processing (SMP) architecture. AX includes an optimized multi-CPU platform built from the ground up that leaps the competition in terms of performance, scalability and reliability. For more information, visit: www.a10networks.com/products/axseries



ABOUT A10 NETWORKS

A10 Networks was founded in 2004 with a mission to provide innovative networking and security solutions. A10 Networks makes high-performance products that help organizations accelerate, optimize and secure their applications. A10 Networks is headquartered in Silicon Valley with offices in the United States, Japan, China, Korea and Taiwan. For more information, visit: www.a10networks.com

ABOUT CRC HEALTH GROUP

CRC Health is the largest provider of specialized behavioral health care services in the U.S. CRC Health treats more than 30,000 people with drug and alcohol addiction, learning differences, weight management issues, eating disorders, and other behavioral issues each day. For more information, please visit: www.crchealth.com